

MGB50 Anniversary Run to Fountains Abbey

2nd September 2012

Miles

- 0.0 Zero trip and turn left out of A1M Services Bowburn SP Bishop Auckland
- 1.1 TR A688 SP Spennymoor
- 2.7 At Thinford, cross A167, SO at roundabout follow A688 Spennymoor/Bishop Auckland
- 3.5 Turn left B6288 Merrington Lane
- 4.2 SO at roundabout
- 4.6 Through North Close SP Coundon, Ferryhill, Kirk Merrington
- 5.2 Through Kirk Merrington – follow sign 'Leasingthorne'
- 5.9 SO at Leasingthorne
- 6.8 SO at roundabout SP Eldon
- 8.1 TR SP Eldon
- 8.11 TL SP Shildon
- 8.8 TR at T junction
- 8.81 TL SP 'Station'
- 9.7 TL A6072 SP Bishop Auckland
- 10.0 TR at roundabout Shildon/Bishop Auckland A6072
- 10.5 TL at roundabout Bishop Auckland/Shildon
- 11.5 Roundabout first exit, Brusselton/Royal Oak narrow road.
- 13.5 TL and then TR in 100 yards SP Piercebridge B6275 crossing A68
- 18.5 TR SP Barnard Castle A67 and immediately left SP Piercebridge/Scotch Corner the left again after 200 yards opposite The Carlbury Arms
- 20.9 TR SP Aldborough – at white house (Lucy Cross) – follow signs for Richmond and Melsonby
- 23.9 SO at cross roads in Melsonby (past village shop/Post Office) into Moor Road
- 25.1 SO at offset cross roads Cross the A66
- 26.0 TL through Gilling SP Richmond
- 28.2 SO SP Richmond
- 28.7 TR at roundabout
- 29.1 SO at Roundabout
- 29.2 TR at next roundabout
- 29.4 TR (Hurgill Road) then turn into car park opposite Richmond Cricket Club 100 yards on the left

Richmond to Fountains Abbey

Miles

- 0.0 Zero trip on leaving car park and turn right
- 0.05 TL onto Victoria Road
- 0.1 TR onto Rosemary Lane immediately after zebra Crossing and follow road round to the right
- 0.2 TL down cobbled street Bargate
- 0.3 SO down hill
- 0.4 SO over bridge
- 0.7 TL SP Catterick Garrison
- 1.2 TR at T junction
- 2.1 2nd exit at roundabout
- 2.5 2nd exit at roundabout SP Scotton
- 3.2 2nd exit at roundabout SP Scotton
- 3.8 TR SP Hinton/Leyburn
- 4.8 TL SP Tunstall/Catterick
- 5.7 TR SP Tunstall/Catterick A6108
- 8.6 SO at crossroads SP Newton le Willows/Masham
- 10.0 TR SP Masham
- 10.3 TL (follow main road)
- 13.0 TL at Halfpenny Cottage (before red phone box)
- 14.5 TR onto main road SP Masham
- 15.2 TL SP Well Thirsk B6267
- 16.7 TR SP West Tanfield
- 18.1 SO past The Bull Inn
- 23.7 TR at the clock tower
- 23.8 TL SP Fountains Abbey
- 23.9 TR SP Pateley Bridge/Fountains Abbey
- 24.0 SO at traffic lights
- 24.6 TL SP Pateley Bridge (Fountains Abbey)
- 26.5 TL into Fountains Abbey follow road to Car Park B. Park as directed

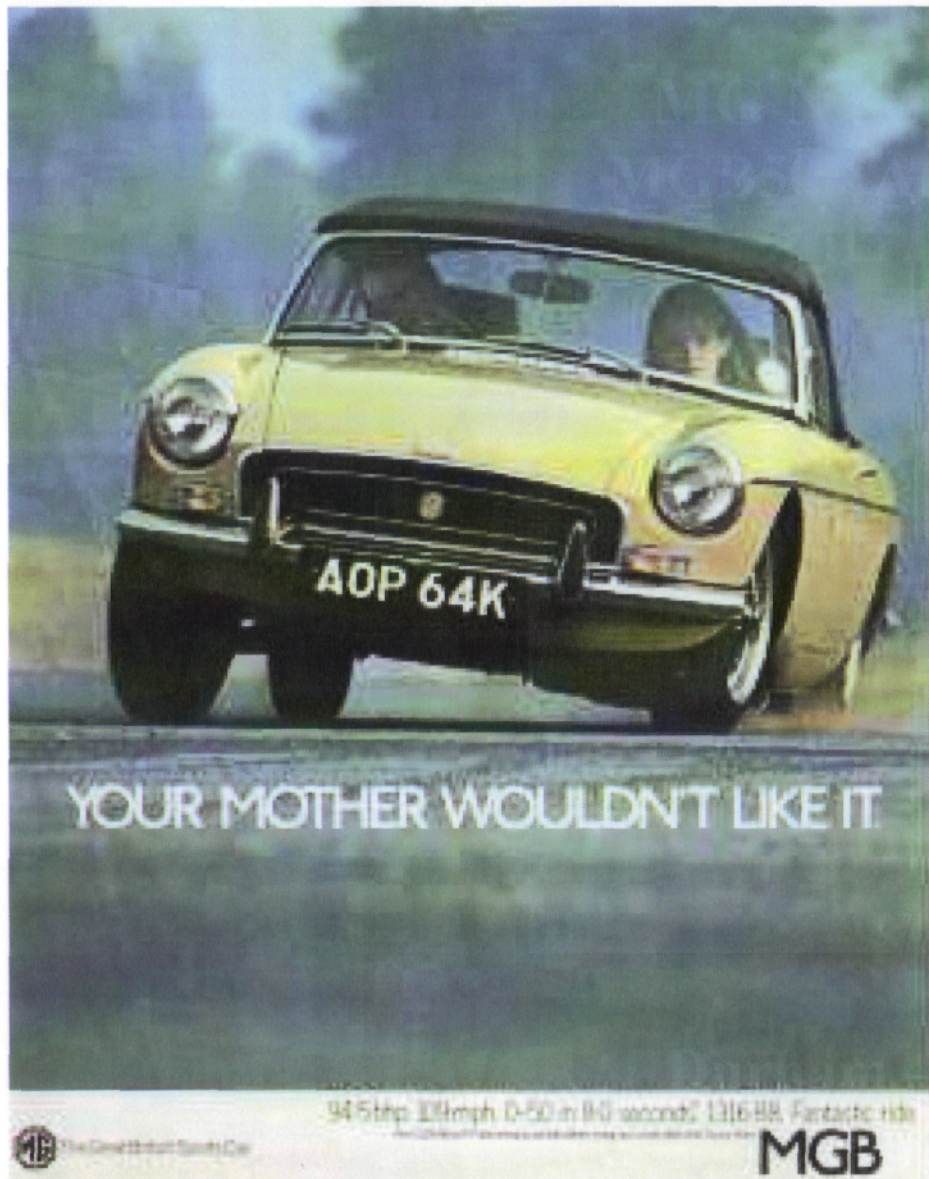
TR = turn right, TL = turn left, SO = straight on, SP = sign post

MG North of England MGB50 - Anniversary Run



Durham – Richmond – Fountains Abbey

16th September 2012



The publicity material for the MGB was wonderful - for many of us it brings back memories of a far less complicated and PC sensitive age with strap lines like "Your mother wouldn't like it!" with the usual response "she's not getting it!" or "Standard equipment on every MGB. 50 years of thundering legends" or "Grab your MG years while you can, sans carrycot, sans mortgage!" or "You can do it in an MGB" - and some of us did! But the most memorable line was surely "Some day you will settle down with a nice sensible girl, a nice sensible house and a nice sensible family saloon . . . some day." Come to think of it many years later I still hear that line spoken occasionally as I drive off in the B. (Anon)